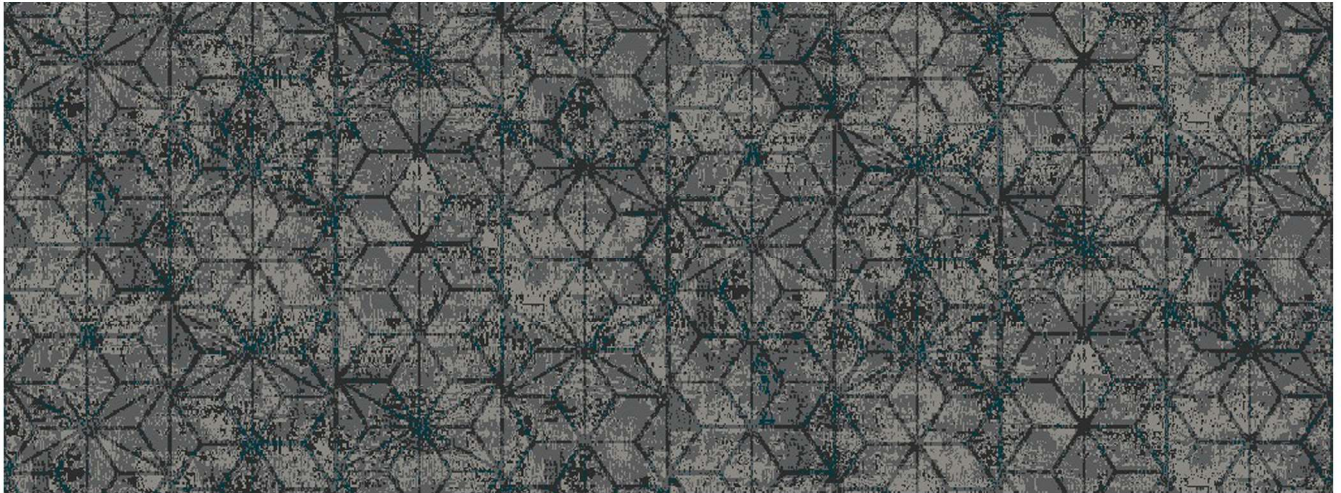


## Express2Go: Prism



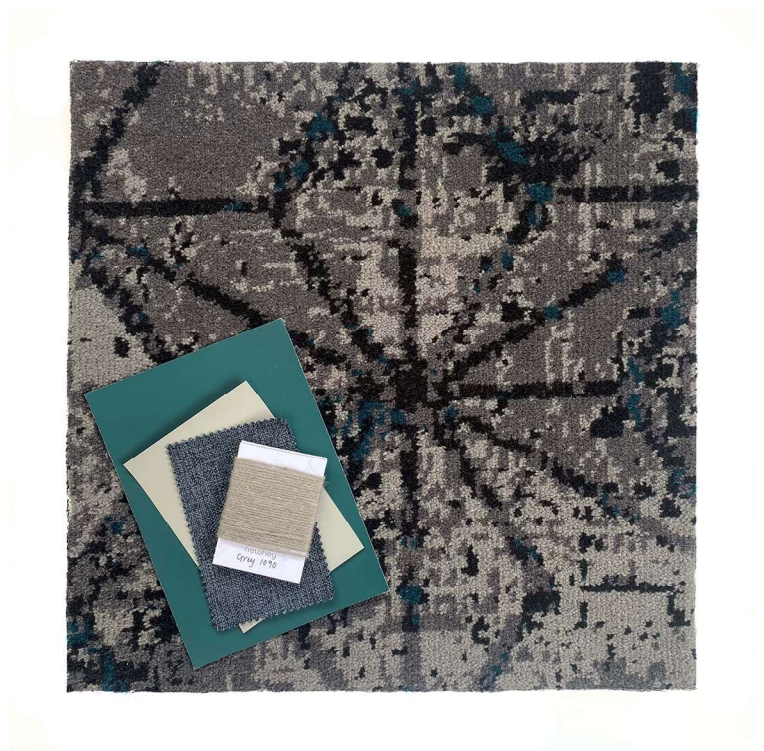
Represents 4.00m x 1.50m

### Product Specification

Construction:	Colortec
Description:	Cut Pile Patterned Tufted
Pile Content:	80% wool / 20% nylon
Pile Weight:	1,400g/m <sup>2</sup>
Pattern Match:	Allow 30cm per cut Non-critical Side Match
Width:	4.00m
Secondary Backing:	<b>evobac</b> <small>ADVANCED BACKING SYSTEM</small>
Pile Height:	7.5mm
Total Thickness:	10mm
Country of Origin:	U.K

### Performance Testing/Suitability

Performance:	Class 33 Heavy Commercial Use
Luxury Class	LC4
Reaction to Fire	BS EN 13501-1 Cfl-s1



Registered in England 990472

Newhey Carpets Limited  
Gordon Street, Newhey  
Rochdale Lancashire, OL16 3SL  
+44 (0)1706 846 375  
sales@newheycarpets.co.uk  
newheycarpets.co.uk

