

newhey

Great British carpet since 1968

Stock Collection

# Braid



# Creating beautiful carpets and rugs for the hospitality and leisure sector

Newhey Carpets is a leading British manufacturer of contract carpets for the hotel and leisure sector. Applying over 50 years of manufacturing experience, the company constantly embraces the very latest production techniques in order to deliver reliable, high performance products to its global customer base.

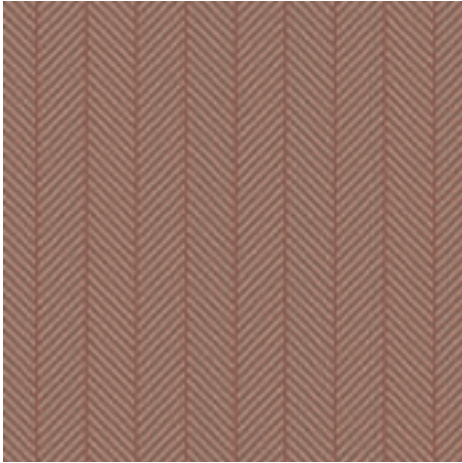
Driven by innovation, Newhey uses a mix of yarns and colours to develop unique solutions for commercial interior designers, all backed up by market leading after sales advice and support.

The company is at the forefront of the carpet sector in terms of reducing its carbon footprint through the development of low embodied energy. Newhey's advanced backing system utilises a solvent free application process to apply the revolutionary evobac, which is made using post consumer recycled PET.

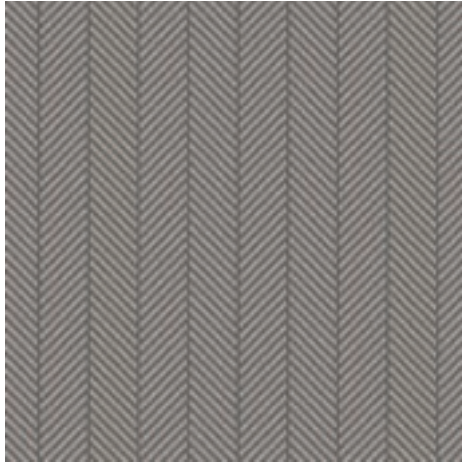
# About the Collection

Braid is a harmonious blend of sophistication and comfort. Crafted with meticulous detail, this collection is available in a palette of 8 muted tones and effortlessly marries modern aesthetics with timeless charm, making it a versatile choice for contemporary interiors seeking a refined yet cosy ambience.

Available in:  Rolls  Cut lengths  Rugs



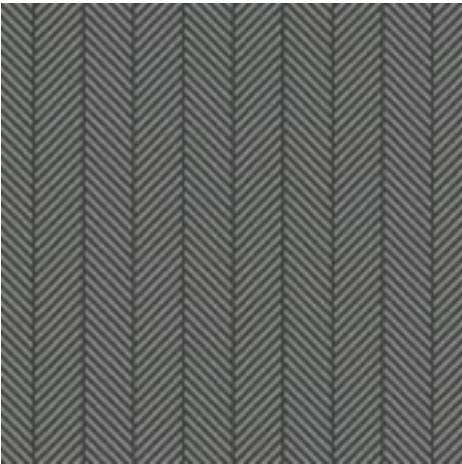
Apricot



Clay



Coast



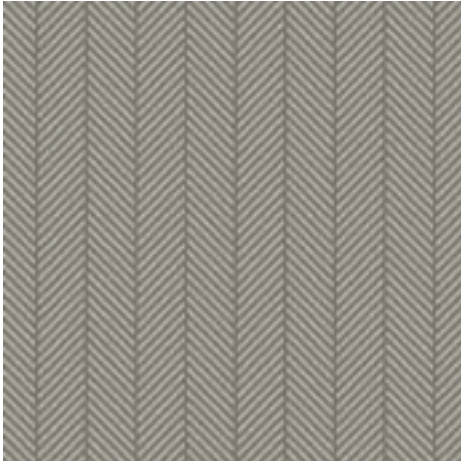
Dusk

Thumbnails represent 0.50m x 0.50m.

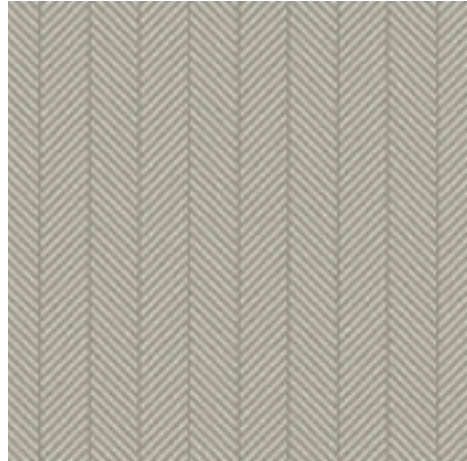
# Product Specification

Width:	4.00m
Total pile weight:	1,250g/m <sup>2</sup> (36.88oz/yd <sup>2</sup> )
Pile content:	80% wool / 20% nylon
Suitability:	General commercial
Secondary backing:	evobac

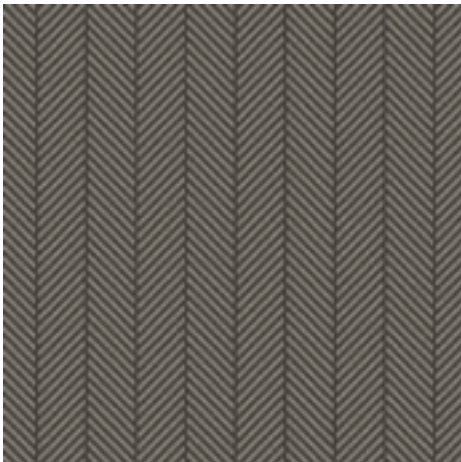
Download the full specification sheet



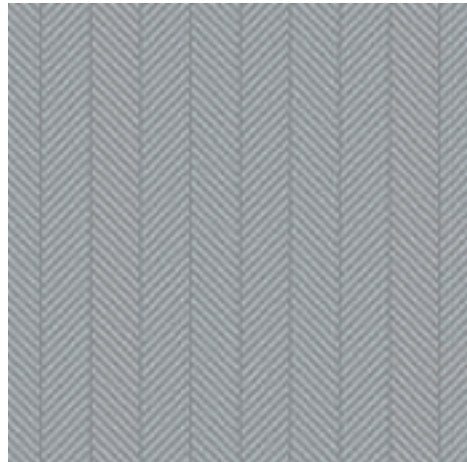
Kew



Marble



Shetland



Sky

Scan here to view all our stock collections





One square metre prevents at least eight plastic bottles from going to landfill or entering our oceans.

## The benefits



Less risk of scuffing skirtings and paintwork.



Excellent underfoot comfort



Easier to cut, reducing wear on blades.



Compatible with conventional installation methods – stretch fit and double stick.

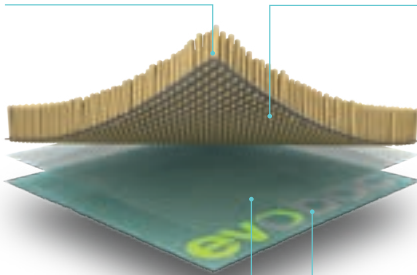
## Carpet construction

### Surface Pile Yarn

High quality 80/20 wool nylon yarn blends  
Natural, renewable and sustainable

### Primary Backing

- Post-consumer recycled PET plastic
- High performance
- Sustainable



### High Strength Thermoplastic Bonding Agent

Durable  
Guarantees against delamination

evobac



## How evobac is made



1 Plastic bottles are shredded into flakes.



2 The flakes are converted into tape and woven.



3 Next polyester fibre is needed into the woven tape.



4 The result — evobac.

## Area rugs

Each of our stock collections can be transformed into stunning area rugs, providing the same high quality and durability we are renowned for with our broadloom carpets.

Expert binding of all our rugs is carried out at our factory in the UK, offering a variety of both narrow and wide taped edge finishes in a host of colour options.



## Stock collections

Our extensive off the shelf stock collections are all available to view and download from our website. You can also request samples and download technical specifications.



Express2Go – Versailles



The inspire section of our website is also a great place to keep up to date on current inspiration and project installations.

Curio – Marine



Newhey Carpets Ltd.  
Gordon Street, Newhey,  
Rochdale, OL16 3SL

[sales@newheycarpets.co.uk](mailto:sales@newheycarpets.co.uk)  
[www.newheycarpets.co.uk](http://www.newheycarpets.co.uk)

+44 (0)1706 846 375



© Newhey Carpets 2022. All copyright design rights are the property of Newhey Carpets Ltd. Colours are reproduced within the limits of the printing process.

**newhey**  
Great British carpet since 1968