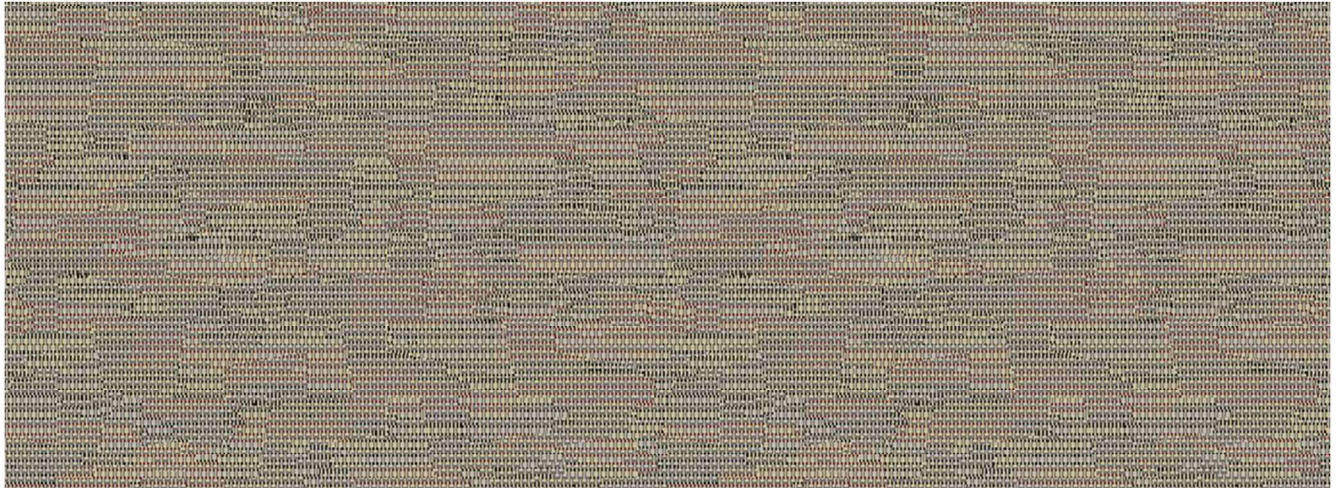


Macrame: Cassis



Represents 4.00m x 1.50m

Product Specification

Construction:	Colortec
Description:	Cut Pile Patterned Tufted
Pile Content:	80% wool / 20% nylon
Pile Weight:	1,400g/m ²
Pattern Match:	Allow 30cm per cut Non-critical Side Match
Width:	4.00m
Secondary Backing:	evobac
Pile Height:	7.5mm
Total Thickness:	10mm
Country of Origin:	U.K

Performance Testing/Suitability

Performance:	Class 33 Heavy Commercial Use
Luxury Class	LC4
Reaction to Fire	BS EN 13501-1 Cfl-s1



Registered in England 990472

Newhey Carpets Limited
Gordon Street, Newhey
Rochdale Lancashire, OL16 3SL
+44 (0)1706 846 375
sales@newheycarpets.co.uk
newheycarpets.co.uk

