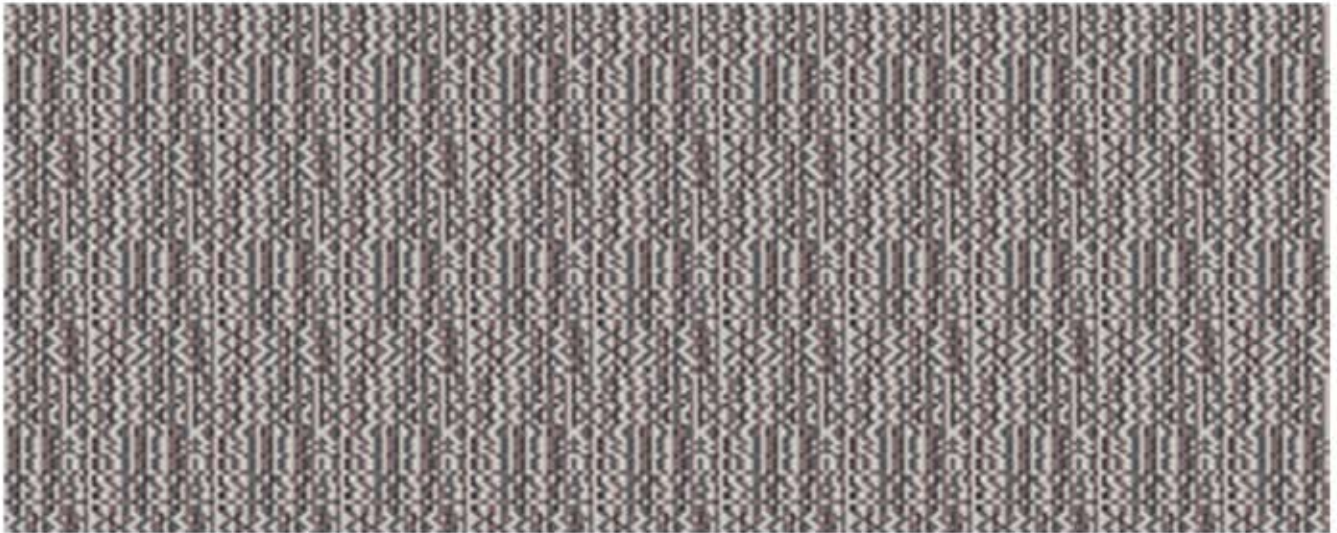


Stria: Heather



Represents 1.00m x 0.40m

Product Specification

Construction:	Graphics Tufted
Description:	Cut Pile Patterned Tufted
Pile Content:	80% wool / 20% nylon
Pile Weight:	1,250g/m ²
Pattern Repeat:	0.14m
Width:	4.00m
Secondary Backing:	evobac
Pile Height:	7.0mm
Total Thickness:	9.0mm
Country of Origin:	U.K



Performance Testing/Suitability

Performance:	Class 23/32 General Commercial Use
Luxury Class	LC3
Reaction to Fire	BS EN 13501-1 Cfl-s1



Registered in England 990472

Newhey Carpets Limited
Gordon Street, Newhey
Rochdale Lancashire, OL16 3SL
+44 (0)1706 846 375
sales@newheycarpets.co.uk
newheycarpets.co.uk

