

newhey

Great British carpet since 1968

Stock Collection

Express2Go



About the Collection

Express2Go consists of 7 unique designs, combining classic and contemporary styles providing an array of on trend patterns suitable for heavy contract areas. Manufactured at 4 metres wide, using a mixture of natural undyed, velvet and twist yarns, this collection really does exude luxury and style. Please contact our sales office for pattern repeat details.

Available in:  Rolls  Cuts  Rugs

All stock designs can be transformed into stunning area rugs.
Contact us for more information 01706 846 375.





Represents 2mt x 1mt



Rosemoor

Represents 2mt x 1mt



Chicane





Represents 2mt x 1mt



Barra



Represents 2mt x 1mt



Basilica

Represents 2mt x 1mt



Chameleon



Represents 2mt x 1mt

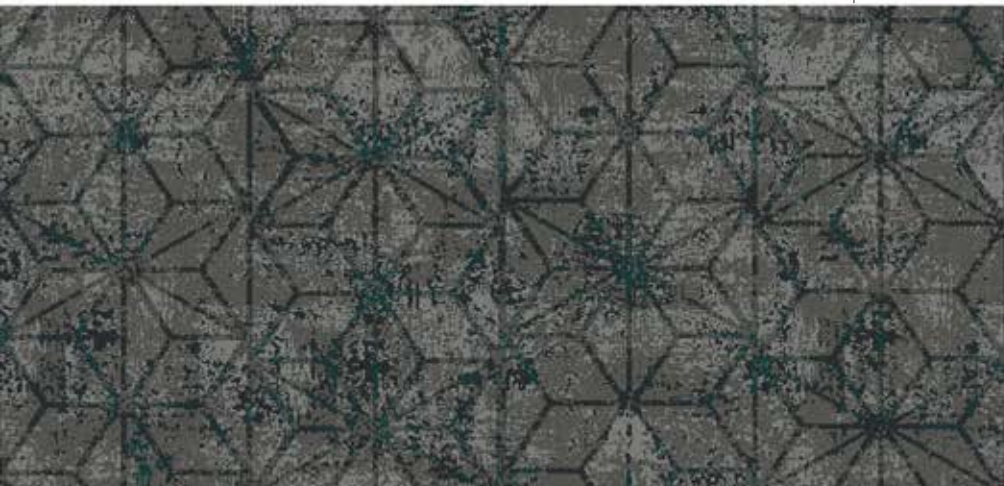


Palladian





Represents 2mt x 1mt



Prism

Product Specifications

Quality Name	Silver		
Construction	Colortec		
Description	Cut Pile Patterned Tufted Carpet		
Fibre Content	80% Wool / 20% Nylon		
Country of Origin	U.K.		
	Metric	Imperial	Tolerance
Yarn Count	R560/2	2/55's	
Machine Gauge	25.2/dm	6.4 per inch	
Stitches per inch	39.4/dm	10 per inch	±3%
Tuft Density	992.9/dm	64 per sq inch	±3%
Pile Height above Back	7.5mm	0.30"	±10%
Total Carpet Thickness	10.0mm	0.41"	±10%
Total Pile Weight	1400g/m ²	41.30oz/yd ²	±10%
Total Carpet Weight	2070g/m ²	61.07oz/yd ²	±10%
Product Width	4.00m		±1.25%
Backing Materials	Woven Polyester, EVA (ethylene vinyl acetate), evobac; 100% recycled PET-Post consumer plastic		

Performance Testing/Suitability

Performance BS EN 1307	Class 33: Heavy Commercial Use
Luxury Class	LC4

E.U Standards

BS EN 13501-1	Cfl-s1
---------------	--------

U.S Standards

ASTM E648 Critical Radiant Flux	Class 1
AATCC 134 Electrostatic Propensity	less than 3.5 kV
ASTM D2859 Surface Flammability	Passes
ASTM E662 Smoke Density	Less than 450

Colour Fastness

Light	Minimum 5
Shampooing	Minimum 4
Water	Minimum 4
Rubbing	Minimum 4

Installation Methods

Carpet should be installed in accordance with Newhey installation specifications. This may vary subject to type of installation and site conditions. For guidance and advice please contact a Newhey representative.

Maintenance

Proper maintenance and care is critical to the long term performance of any carpet and should be written in to the specification of a project. For guidance and advice please contact a Newhey representative.

Newhey Carpets Limited reserve the right to change specification and construction materials due to raw material shortages or for the purposes of product improvements. All specifications are subject to normal manufacturing tolerances. Dye lots may vary from batch to batch.



EN14041 | 2004