

newhey

Great British carpet since 1968

Stock Collection

Natural Wool & Natural Earth

Manufactured using 100% undyed wools





Design: Panama

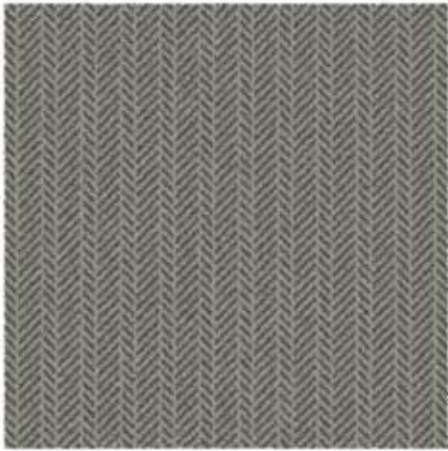
About the Collection

The Natural Wool Collection and Natural Earth Collection are eco-friendly choices, manufactured using 100% undyed wools. With no colour dyes or chemical treatments applied, these designs are a smart choice for the environment. Offering 6 options manufactured at four metres wide in a heavy commercial specification, making it perfect for guestrooms or public areas.

Our spinners achieve the beautiful range of natural shades by carefully blending the wools together. Each of the wools are selected for their unique tone, creating rich, organic hues that highlight the wools pure and natural beauty.

By using wool in its natural state, we reduce water and energy consumption while maintaining the fibre's inherent softness, durability and breathability. This sustainable approach ensures that each carpet is not only kind to the environment but also rich in natural character and quality.

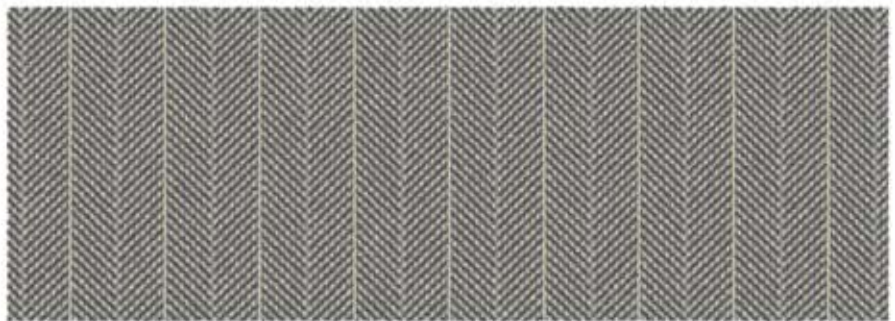
Represents 0.5m x 0.5m



Herringbone



Parquet



Panama

Represents 1.00m x 0.40m



Parquet

NATURAL WOOL
COLLECTION

Represents 0.5m x 0.5m



Dolomite



Basalt



Alabaster

Represents 1.00m x 0.40m



Basalt

NATURAL EARTH COLLECTION

GRAPHICS TUFTED | GT1350

Product Specifications

Quality Name	GT1350		
Construction	Graphics Tufted		
Description	Cut Pile Tufted Carpet		
Fibre Content	80% Wool / 20% Nylon		
Country of Origin	U.K.		
	Metric	Imperial	Tolerance
Yarn Count	R560/2	2/55's	
Machine Gauge	31.5/dm	8 per inch	
Pile Height above Back	7.0mm	0.28"	±10%
Total Carpet Thickness	9.0mm	0.39"	±10%
Total Pile Weight	1350g/m ²	39.83oz/yd ²	±10%
Total Carpet Weight	2020g/m ²	59.59oz/yd ²	±10%
Product Width	4.00m		±1.25%
Backing Materials	Woven Polyester, EVA (ethylene vinyl acetate), evobac; 100% recycled PET- Post consumer plastic evobac		

Performance Classification

Performance BS EN 1307	Class 33; Heavy Commercial Use
Luxury Class	LC4

E.U Flammability Classification

BS EN 13501-1	Cfl-s1
---------------	--------

Colour Fastness

Light	Minimum 5
Shampooing	Minimum 4
Water	Minimum 4
Rubbing	Minimum 4

Installation Methods

Carpet should be installed in accordance with Newhey installation specifications. This may vary subject to type of installation and site conditions. For guidance and advice please contact a Newhey representative.

Maintenance

Proper maintenance and care is critical to the long term performance of any carpet and should be written in to the specification of a project. For guidance and advice please contact a Newhey representative.

Newhey Carpets reserve the right to change specification and construction materials due to raw material shortages or for the purpose of product improvements. All specifications are subject to normal manufacturing tolerances. Dye lots may vary from batch to batch.

